

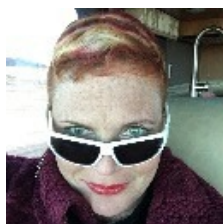
## MATH 155-05/SECTION 2396 REVISED 1/23/18

### Calculus II

When: MONDAY & WEDNESDAY 3:30PM-5:20PM

Where: SAN501

### INSTRUCTOR INFORMATION



**INSTRUCTOR:** SHANNON MYERS

**OFFICE LOCATION:** OCEANSIDE CAMPUS/T-538

**OFFICE HOURS:** Monday from 12:30PM-1:20PM at the San Elijo Cafeteria, Tuesday online from 11:00AM-12:00PM at

<https://cccconfer.zoom.us/j/463595851>, and by appointment

### HOW TO CONTACT ME

#### PHONE:

760 -757-2121 x 6306

(office)

858-232-4728 (mobile)

#### SKYPE:

mathchick\_mc

#### EMAIL:

[smyers@miracosta.edu](mailto:smyers@miracosta.edu)

#### WEBSITE:

[www.mathchick.net](http://www.mathchick.net)

### COURSE DESCRIPTION AND PREREQUISITE



**DESCRIPTION:** This second course in a three-semester calculus sequence covers advanced integration techniques, improper integrals, infinite series, conic sections, parametric equations, and polar coordinates. The course is designed for mathematics, science, and engineering majors.

**PREREQUISITE:** MATH 150 with a grade of "C" or better.

### STUDENT LEARNING OUTCOME

For a given set of problems the student will demonstrate quantitative reasoning by developing a problem-solving strategy, performing appropriate analysis and computation, and critically assessing the meaning of the conclusion or outcome.

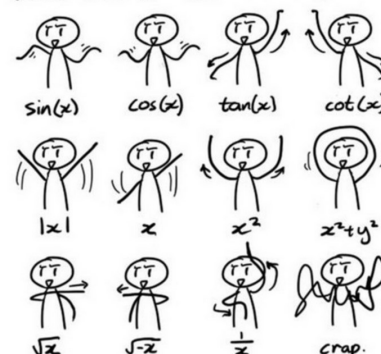
### MIRACOSTA COLLEGE CORE COMPETENCIES

Knowledge of Human Cultures and the Physical and Natural World, Intellectual and Practical Skills, and Personal and Social Responsibility and Efficacy.

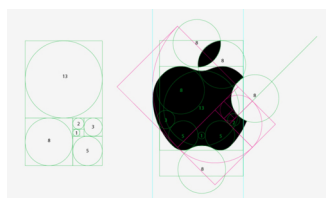
## REQUIRED MATERIALS

1. **Math 155 Guided Notebook** by Shannon Myers. You may purchase the notebook at the bookstore or download it for free at [http://mathchick.net/SWC/MATH%20155/m155\\_guided%20notebook\\_FA17.pdf](http://mathchick.net/SWC/MATH%20155/m155_guided%20notebook_FA17.pdf)
2. **WebAssign (WA) OR ONLINE TEXT OR REGULAR TEXT.** WebAssign offers the text online or both text and homework online. It is much less expensive than buying the hard copy of the text. It is available through the campus bookstore or directly through WebAssign at [www.webassign.net](http://www.webassign.net). The name of the text is *Calculus, 10<sup>th</sup> Ed.* by Ron Larson and Bruce Edwards. In WebAssign, you'll have access to the online text and homework (extra credit) for \$100 (1 semester) or \$125 (multiple semesters). If you already have the regular textbook and you're not interested in working the homework problems for extra credit, you can just use that. The class key for WA is **miracosta 2958 8652**.
3. **Calculator:** A graphing calculator is REQUIRED for this course. There are TI-84 calculators available for use during our class. Calculators that perform symbolic differentiation and integration may not be used. If you will be purchasing a calculator for this course, I strongly recommend the TI-84. A TI-84 will be used in the lectures. Only the TI-83 or 84 will be allowed on tests. **Not all tests allow the use of a graphing calculator.**

### Beautiful Dance Moves



## DA RULES...



**Attendance:** Each student is responsible for his/her registration in classes. Each student must attend the first class meeting or make arrangements with the instructor if he/she is going to be absent. Failure to attend the first class meeting, and/or excessive unexcused absences, that is, more than 8 hours of

missed class time, may result in a student being dropped from this class.

**Questions:** Questions are an important part of the learning process. If you have a question, please feel free to ask at any time. If you have a question, there are probably at least 5 other students with the same question. If I cannot answer your question immediately, I will come back to it ASAP.

**Academic Honesty:** I fully support MiraCosta College's belief that academic honesty is a cornerstone of the educational community. To that end, I expect academic honesty from my students. Students who bring unauthorized material to a test/quiz or copy from someone else's test/quiz will receive a zero on the test/quiz.

## GRADING POLICY

Your grade will be determined by comparing your points to the total number of points possible. The following grading scale will be used to determine letter grades:

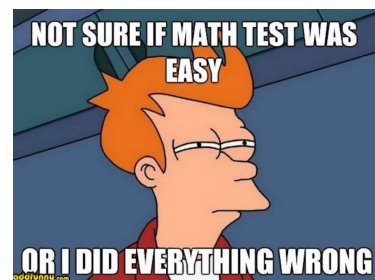
A = 90 - 100%

B = 80 - 89.9%

C = 70 - 79.9%

D = 60 - 69.9%

F = below 60%



**Grades will be based upon the following components:**

Homework: WebAssign (0% EXTRA CREDIT ONLY)

**WebAssign Homework:** Your class key is **miracosta 2958 8652**. Assignments are due weekly, on Sundays, or the day before an exam.

Quizzes: In class, most days. I'll drop the 2 lowest scores (20%)

Exams: 3 Tests will be given; worth (60%) of total grade.

**Exam 1: Wednesday, 2/26/18**

Material covered: Ch. 8

**Exam 2: Monday, 4/2/18**

Material covered: Ch. 9

**Exam 3: Monday, 4/23/18**

Material covered: Sec. 7.4 and Ch. 10

Final Exam: The final exam will be worth approximately (20%) of your grade. The exam will cover some material from the whole course, but will primarily cover

Section 7.4 and Chapter 10. **Final exam: Monday, 5/21/18 from 4:00PM-5:50PM in room SAN 501**

\*If it is to your advantage, your lowest test score will be replaced by half of your score on the final (this includes one missed test, which counts as zero until replaced by half the score on the final).

Make-Up Policy: You may take a test early if circumstances warrant and if the test is available. Please check with me well in advance of the test date. If you miss an exam, contact me immediately. Make-ups will be given on a case-by-case basis. You may be required to provide verification.

# MYERS/MATH 155 SPRING 2018 TENTATIVE SCHEDULE

JANUARY	22	23	24	25
	Intro, Review		8.1	
JANUARY/ FEBRUARY	29	30	31	1
	8.2		8.3	
FEBRUARY	5	6	7	8
	8.4		8.5	
FEBRUARY	12	13	14	15
	8.7-8.8		8.8	
FEBRUARY	19	20	21	22
	HOLIDAY		Review	
FEBRUARY/ MARCH	26	27	28	1
	EXAM 1/CH. 8		9.1	
MARCH	5	6	7	5
	9.2		9.3	
MARCH	12	13	14	15
	9.4		9.5	
MARCH	19	20	21	22
	SPRING	BREAK	NO	CLASSES
MARCH	26	27	28	29
	9.6		Review	
MARCH/APRIL	2	3	4	5
	EXAM 2/ CH. 9.1-9.6		9.7	
APRIL	9	10	11	12
	9.8		9.9	
APRIL	16	17	18	19
	9.10		Review	
APRIL	23	24	25	26
	EXAM 3/ CH. 9.7-9.10		7.4	
APRIL/MAY	30	1	2	3
	10.1		10.2	
MAY	7	8	9	10
	10.3		10.4	
MAY	14	15	16	17
	10.5		Review	
MAY	21	22	23	24
	FINAL EXAM/ 4:00-5:50PM			

**Math Learning Center:** The MLC is open to all math students at MiraCosta. Services include drop-in tutoring, computerized tutorials, and homework help. Calculators, textbooks, and headphones are available for use in the MLC.  
<http://www.miracosta.edu/instruction/mathematics/mlc/index.html>

<b>Oceanside: BLDG. 1200</b>	<b>San Elijo: BLDG. 100</b>	<b>Community Learning Center: Room 136</b>
<b>Phone number:</b> <b>(760)757-2121 x 6381</b>	<b>Phone number:</b> <b>(760)757-2121 x 7781</b>	<b>Phone number:</b> <b>(760)757-2121 x 8843</b>
<b>M–TH: 8:00 am – 9:00 pm</b>	<b>M–TH: 9:00 am – 8:00 pm</b>	<b>M – F: 8 am – 1 pm</b>
<b>Friday: 8:00 am– 3:00 pm</b>	<b>Friday: 9:00 am– 3:00 pm</b>	<b>Saturday/Sunday: Closed</b>
<b>Saturday:</b> <b>12:00 pm-5:00 pm</b> <b>Sunday: Closed</b>	<b>Saturday/Sunday: Closed</b>	

**Tutoring Services:** The MiraCosta College tutoring program provides academic assistance free of charge if you are enrolled in either day or evening credit classes. Tutors are available by appointment for individual (one-to-one) help and on a drop-in basis (visit the tutoring center to view the current drop-in schedule). Appointment sessions usually last 50 minutes and are arranged for the student and tutor at a mutually convenient time. Additional sessions may be requested as needed.

<http://www.miracosta.edu/studentservices/tutoring/index.html>

Their phone numbers are:

Oceanside: 760.795.6682

San Elijo: 760.944.4449 x7748

**ONLINE TUTORING:** <http://miracosta.edu/instruction/tutoring/onlinetutoring.html>

**Nordson STEM Center:** The STEM Center is located on the Oceanside campus and supports all students in STEM courses. The STEM Center offers free Drop-In Tutoring for many courses in biology, biotechnology, chemistry, physics, and physical science. The STEM Center also hosts Drop-In Counseling hours, group study rooms (reserve online), laptops, molecular models, and many textbooks for STEM Center usage. Many STEM Workshops are offered to help students succeed in their STEM courses and explore career/job opportunities in STEM related fields.

<http://www.miracosta.edu/studentservices/stem/index.html>

Location: OC 1200

Phone number: 760.757.2121, x6388

**Disabled Students:** If you have a disability, you are encouraged to contact Disabled Students Programs & Services at 795-6658. Their office is located in Building 3000, adjacent to Parking lot 3C. They will help you determine what assistance is available for you. Any student requiring special assistance due to a disability must discuss what is needed with me by the second week of semester. <http://www.miracosta.edu/studentservices/dsps/index.html>

**LGBTQIA Safe Space Program:** MiraCosta College has an expressed commitment to equity and inclusion for students, faculty, and staff members who are lesbian, gay, bisexual, transgender, queer, questioning, intersex, and asexual. The district employs a Campus Liaison for LGBTQIA+ Needs, offers [LGBTQIA Safe Space](#) training, and has multiple student scholarships for members and active allies of the LGBTQIA+ community. For information about these and additional campus resources and services visit [miracosta.edu/lgbt](http://miracosta.edu/lgbt) or contact the campus liaison for LGBTQI needs at 760-795-6460.

**Veteran Services:** The Veterans Education Office, located in Building 3300, provides assistance to veterans and dependents wishing to use their educational benefits at MiraCosta College.

The Veterans Information Center, located in Building T-100, provides a place for students to find resources on VA educational benefits, MiraCosta Student Services, and community organizations that are dedicated to assisting veterans. The center also provides a place for students to relax, study, and meet with friends. The Veteran Peer Advisors are also available. Resources are available on a variety of issues, including employment, counseling, housing, and healthcare.

<http://www.miracosta.edu/studentservices/veteransservices/index.html>

Oceanside Campus  
3300 Building: P 760.757.2121 x6285  
T100 Building: P 760.757.2121 x6981

**Counseling Services:** The Counseling Center offers individualized academic, career, and personal counseling to assist both prospective and current students in developing their educational programs, coordinating their career and academic goals, and understanding graduation, major, certificate, and transfer requirements. Students can use online resources (<http://www.miracosta.cc.ca.us/studentservices/counseling/index.html>) for general questions and visit or call the office for appointments and drop-in times:

Oceanside Campus	San Elijo Campus
<b>Building 3700 (Parking lot 3C)</b>	<b>Administration Building</b>
<b>Phone: 760-795-6670 Fax: 760-795-6663</b>	<b>Phone: 760-634-7811 Fax: 760-634-7875</b>



**Wonderful, Free, Available Resources:** There are many free resources available for you on campus to assist you with your education:

[Food pantry](#)  
[Health Services](#)  
[Textbook loan program](#)

**Wonderful, Supportive Clubs and/or Organizations:** Joining a [club](#) or organization is a fun and instrumental part of your college education. Here are some of the clubs and organizations to check out:

[Math Club](#)  
[Puente](#)  
[Umoja](#)  
[RAFFY](#) (Former Foster Youth)  
and many more

**CLASS KEY: miracosta 2958 8652**



## STUDENT

# QUICK START GUIDE

This Quick Start Guide provides information to help you start using WebAssign.

## ENROLL

Either your instructor enrolled you in a class and created a WebAssign account for you, or she gave you a class key to enroll yourself and create your own account, if needed.

### I have a class key

1. Go to [webassign.net/login.html](http://webassign.net/login.html) and click **I Have a Class Key**.
2. Enter the class key your instructor gave you and click **Submit**.
3. If the correct class and section is listed, click **Yes, this is my class**.
4. Either provide your existing WebAssign account information or create a new account.
  - Select **I already have a WebAssign account**, enter your account information, and click **Continue**.
  - Select **I need to create a WebAssign account**, enter the requested information, and click **Create My Account**.

### I do not have a class key

You are already enrolled and can log in with your WebAssign account.

## LOG IN

Depending on your school, you might log in to WebAssign through a course management system, your school's authentication server, or at [webassign.net/login.html](http://webassign.net/login.html).

### LOG IN AT WEBASSIGN.NET

1. Go to [webassign.net/login.html](http://webassign.net/login.html).
2. Type your **Username**, **Institution** code, and **Password**.  
If you did not receive a password, click **Forgot your password** and create a password.
3. Click **Log In**.

**IMPORTANT:** The first time you log in, change your password.

## PURCHASE ACCESS

WebAssign gives you free access for two weeks after the start of class. To continue using WebAssign after that, either enter an access code or purchase access online.

**NOTE:** An Access Code included with some textbooks verifies that you have already purchased WebAssign access.

### I have an access code

1. Verify your access code at [webassign.net/user\\_support/student/cards.html](http://webassign.net/user_support/student/cards.html).
2. Log in to WebAssign.
3. Select **enter an access code**.
4. Select your access code prefix.
5. Enter your access code and click **Continue**.

### I do not have an access code

1. Log in to WebAssign.
2. Select **purchase access online** and click **Continue**.
3. Select items to purchase, confirm any license agreements, and click **Enter payment information**.
4. Provide your payment and contact information to PayPal and click **Continue**.
5. Review your order and click **Complete purchase**.
6. Close your receipt and start working in WebAssign.

## LEARN

Your current assignments are listed on the **Home** page for each class.

1. Click the assignment name.
2. Answer the assignment questions.  
WebAssign supports many different question types. Some questions display a tools palette or open in a new window.
3. Submit your answers.
4. Review your marks and feedback.  
Usually you will see or for each answer.
5. Change your incorrect answers and submit again.
6. When you are done, always click **Log out**.

## SYSTEM REQUIREMENTS

WebAssign is tested and supported for the following web browsers:

**Mozilla® Firefox® (38+)**  
Windows®, macOS®, Linux®  
**Internet Explorer® /**  
**Microsoft® Edge (11+)**  
Windows  
**Google® Chrome™ (44+)**  
Windows, macOS  
**Apple® Safari® (8+)**  
macOS, iOS 8 or later on iPad®

## BROWSER SETTINGS

Configure the following settings in your Web browser.

- Allow cookies and pop-up windows from [webassign.net](http://webassign.net).
- If you are accessing WebAssign from Blackboard®, accept third-party cookies.
- Do not allow your browser to store your WebAssign password.
- **GOOGLE CHROME:** Enable Adobe® Flash® Player.

## CUSTOMER SUPPORT

**ONLINE:**  
[webassign.secure.force.com/wakb2](http://webassign.secure.force.com/wakb2)

**CALL:** 800.955.8275

The WebAssign Customer Support staff can **NOT**:

- change your username or password
- give extensions
- change your score
- give you extra submissions
- help you with the content of assignments

Contact your instructor for help with your grade or coursework.

## PAYPAL SUPPORT

**ONLINE:** [paypal.com](http://paypal.com)  
**CALL:** (402) 935-2050

## MORE INFORMATION

Search the online help for answers to most questions:  
[webassign.net/manual/student\\_guide/](http://webassign.net/manual/student_guide/)